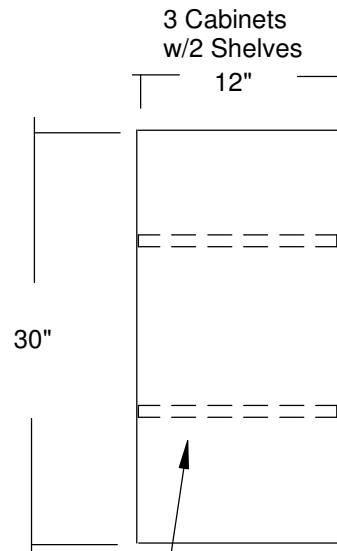
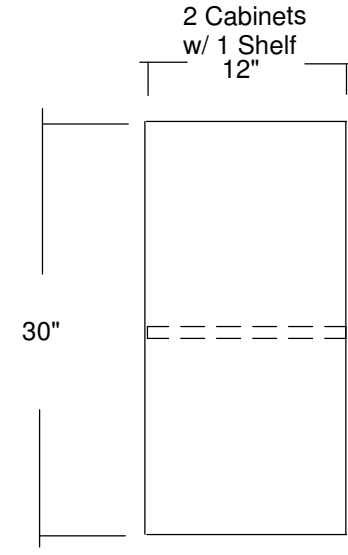



Doors will have Gasket for Dust Seal



All Shelves Removable



	Approvals Drawn By J. Lamb Approved By N/A		Date 8/25/10	
	Qty.: 5			Material: SS 304 #3 16 Ga. SS Hinges Multi-point Latch
TITLE Double Door Cabinet 30"Wx12"Dx30"H Removable Shelves				
PROPRIETARY THIS DOCUMENT AND THE DATA DISCLOSED HEREIN OR HERewith IS NOT TO BE REPRODUCED, USED OR OTHERWISE DISCLOSED IN WHOLE OR IN PART TO ANYONE WITHOUT THE WRITTEN AUTHORIZATION FROM G2 AUTOMATED TECHNOLOGIES, LLC				
SIZE N/A		CAGE CODE		DWG NO GAT-CAB-123030-SS
SCALE			SHEET 1-0	

A4

